



Archdiocese of Birmingham

ST. MARY'S CATHOLIC PRIMARY SCHOOL

Vivian Road, Harborne, Birmingham, B17 0DN

Telephone: 0121 464 2141

Email: enquiry@stmaryrc.bham.sch.uk

www.stmaryrc.bham.sch.uk

Headteacher: Mrs L. J. Yorke M.Ed.



St. Mary's mission: To love God above all things by: learning together, loving ourselves, loving each other, loving all people, loving life itself and constantly striving for excellence worthy of our God-given gifts.



November is dedicated to the Holy Souls.

Our theme for the Autumn term is: 'Families and Community'

Our virtues for this half term are: - 'Intentional and Prophetic'

Dear parents and carers,

23rd November 2024

We have had an exciting week in school with snow on the ground, one of our theatre trips taking place and the Christmas Fair. It really has been busy busy! Lots of super learning continues to take place too and you can follow our curriculum and wider opportunities through our X page.

Issues with our server are still ongoing and the Governors have made the decision to purchase a new one - this will take several weeks to arrive and build but hopefully we'll be on the new server once we return from Christmas break. Thank you for your continued patience. Whilst we are backing up our data and synchronising our systems, this is slowing down some of our programmes, Internet and Communications. Please bare with us. All key dates, including when the nativities are can be found at the end of this newsletter. Our enquiry email address continues to work and if you need messages passed on to a teacher or SLT, please speak to us on the gate in the morning or email in to enquiry.

Your child should now be wearing the St. Mary's winter uniform - this includes ties. We are incredibly proud of our uniform and outward appearance and the children do look so smart in their ties. The PTA have kindly offered to buy extra ties, so please let us know if you need one. We will give ties to any children not wearing one. Please put their names in it and make sure that your child is wearing it to school. Children can continue to wear the St. Mary's PE uniform when they have PE.

There is a uniform for PE too - which includes plain tracksuit bottoms in dark navy or black (no logo or pattern).



PE Uniform

Gold t-shirt
Royal blue shorts
School jumper / cardigan (with school badge)
Dark navy or black **plain** tracksuit bottoms
Black plimsolls
Trainers
No jewellery - earrings taken out



Within the second page of this newsletter, I have included a letter which explains that we are currently

consulting on our school admissions criteria. This has to be done every 7 years and opens on Monday. At this stage, we propose no changes to our current admissions criteria. Please read the letter, which details how you can make comments if you wish to.

Mrs Yorke

We pray for those who have died in November

22/11/2024

Consultation on admissions arrangements

Dear parent/carer,

We are writing to inform you that we are consulting on our school's proposed admissions arrangements for the 2026/2027 academic year.

We are consulting on our admissions arrangements as we are proposing no changes to our current admissions arrangements but have not consulted in the past seven years and are therefore required to consult on our admissions arrangements as per the School Admissions Code (1 September 2021).

The consultation will take place between Monday 25 November 2024 and will close on Monday 6 January 2025. Birmingham City Council's School Admissions and Fair Access Service are undertaking the consultation process on our school's/academy's behalf. During the consultation period you can view a copy of our proposed admissions arrangements on their website here: [Proposed Admissions Arrangements 2026/2027](#) and on our school's website here:

https://www.stmaryrc.bham.sch.uk/web/admissions_arrangements_and_policy/196624

Any parents/carers or other interested parties wishing to make any comments about our proposed admissions arrangements during the consultation period are welcome to do so by going to Birmingham City Council's BeHeard website here: [Birmingham Beheard](#)

Once the consultation period has closed on 6 January 2025, Birmingham City Council's School Admissions and Fair Access Service will send our school any comments that have been received during the consultation period. The admission authority for our school will consider these comments before they formally agree (determine) our admissions arrangements by 28 February 2025.

We thank you in advance for your support and engagement with this process. Our determined admissions arrangements for 2026/2027, will be published on our school's website by 15 March 2025.

Yours sincerely,

Mrs L. Yorke
Head Teacher



Catholic Life



This week's Gospel and Prayer

Mark 13: 31

*'Heaven and Earth will pass away,
but my words will not pass away.'*

Reflecting on this week's Gospel message we learn:

- Change is a part of life.
- God's love for us, revealed in His word, will never change.
- God's unchanging love is the reason for our hope,



Serenity prayer

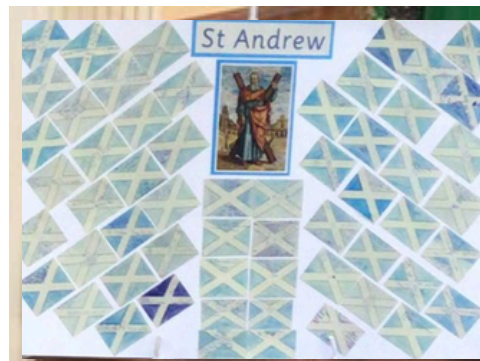
*God, grant me the serenity
to accept the things I cannot change;
courage to change the things I can;
and wisdom to know the difference
Amen*



Year 4 Mass - 20.11.24

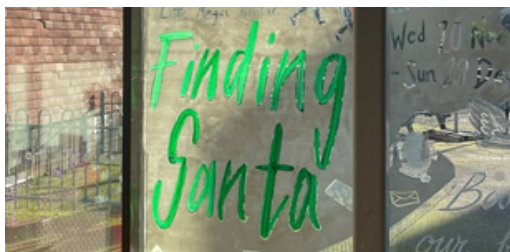
-St. Andrew

Year 4 celebrated a prayerful Mass this week. We thought about what it means to be a Disciple of Jesus and the call of St. Andrew.



Our next Mass: - Y2 Mass for Christ the King

Our next Mass in Church will be on **Wednesday 27th November 2024**, starting promptly at 9:15am. Year 2 will be leading this Mass and Year 1 will be there too. All parents are welcome to attend.



EYFS and KSI Theatre Visit 'Finding Santa' Thursday 21st November 2024

On Tuesday 19th November, all of EYFS and KSI went to the MAC theatre to watch 'Finding Santa' - everybody had a wonderful time. Thank you to all the parents who supported our trip and to our marvellous PTA, who provided a snack for the children to enjoy.



Catholic Life

Look at our lovely RE learning this week: -



Year 3 wrote letters to Jesus, giving thanks for the Eucharist.



Year 4 thought about what it means to be intentional and prophetic in their lives. They asked God to help them in this important task.



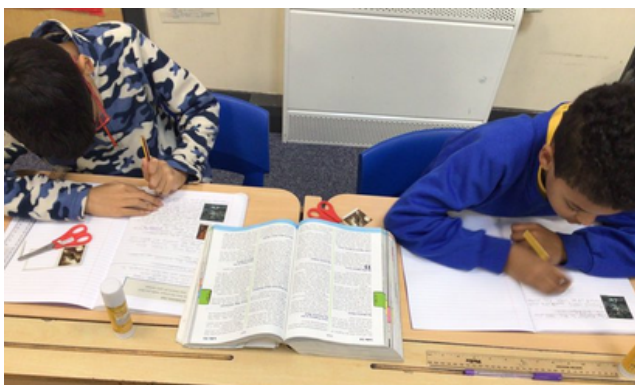
Year 1 have been learning about the Good Samaritan. And their go forth, to be intentional and prophetic in our actions just like the Good Samaritan.



Year 6 considered both the benefits and sacrifices of following Jesus.



Reception created their own beautiful prayer circle where they thanked God for the people who care for them.



Year 4 explored moments of prayer in Jesus' life, reflection on how we can use prayers of thanksgiving, petition and intercession in our lives.



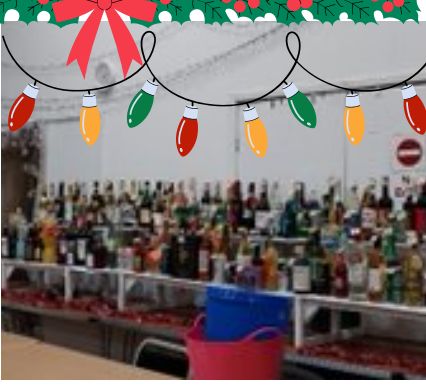
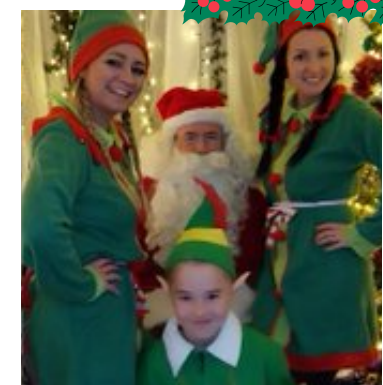
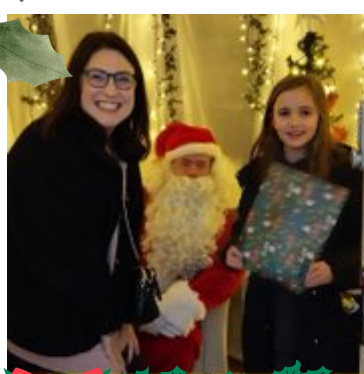
Year 4 have also been learning about Judaism, Y4M visited the Singers Hill Synagogue to find out more.



Our Community Work

A massive thank you to our families who support our fundraising. We received so many donations for the Parish Fair on Saturday 23rd November. Your kind donations go a long way to support our Charity work and we're so grateful.

St. Mary's PTA, along with the Parish put on a marvellous Fair. Thank you staff for supporting too and bringing your families along... Here are some of our favourite photos from the event.



Christmas Fair

Fun in the Snow



**Class 4J Other Faiths Visit
Singers Hill Synagogue
25.11.24**

On Monday 25th November, Y4J will be visiting Singers Hill Synagogue to enhance their learning about Judaism.



Year 5 Harborne Library Visit - 26.11.24

Year 5 will be visiting Harborne Library next Tuesday.

5F will leave at 9:00am

5M will leave at 10:45am

If you are a parent who would like to attend and support walking to and from the library, please let the Year 5 staff know.

Coming up:

The Christmas Discos on 3.12.24 (KS1); 4.12.24 (Reception class) and 5.12.24 (KS2) will be held in the school for an hour straight after school. Tickets are priced at £3 and parents can pay for this via School Gateway. The PTA will be supporting the event by providing drinks and a snack for the pupils. All money raised will go towards the purchase of an additional, outdoor classroom. An exciting project that we hope lots of families support us in fundraising for! The cost of the disco includes wearing non-school Christmas clothing on the day that your child is attending their disco. If your child is not attending the disco, they can still wear Christmas non-school uniform on that day and we ask for £1 please towards our fundraising. Thank you.



Christmas Dinner will be served on Wednesday 11th December!

We will send more information about this but please put the date in your diary - if your child normally brings in a packed lunch on a Wednesday and would like to opt in for Christmas Dinner, please confirm this with the school office.





CHRISTMAS WREATH WORKSHOP

Come and join us on Wednesday

December 4th 7-9pm

in St. Mary's Parish Hall.

Make your own Christmas wreath

Everything included plus a glass of
mulled wine & a mince pie

£25 per person

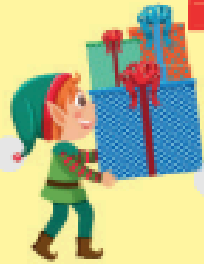
All proceeds go to St. Mary's RC primary
school

We have been asked to support the Birmingham Irish Association Initiative again this year, to provide toys for children who in Birmingham who may not receive a Christmas present this year. Our families and staff have always been so generous at supporting this initiative.

Details can be found below: -

Toy Appeal

Christmas 2024



Please give new toys (unwrapped) for our local children in Birmingham for all age groups ranging from 1-15 years



COLLECTION DATES:

Monday 4th November - Thursday 12th December

ST MARY'S CATHOLIC PRIMARY SCHOOL





St Catherine of Siena Primary School, in Great Colmore Street B15 2AY, support **Birmingham Christmas shelter** every year. This year, the school will open between 24th-28th December to serve those who need food and clothing. Last year, 400 guests received fresh clothes and toiletries in those four days.

St Catherine's have asked our schools to support by collecting items for the Birmingham Christmas Shelter - they need: - **toiletries, biscuits, crisps, cordial, clothing.** If you would like to support, please bring any donations to the school office over the next few weeks.





School Fund

Our School Fund is a vital source of income for our school.

It pays for the 'extras' such as Inspire workshops, curriculum resources, Christmas activities, theatre or performances as well as subsidising school trips.

These 'extras' are enjoyed by all year groups at St Mary's throughout the year.

Contribution to this fund is entirely voluntary and we are very grateful to those parents who regularly support the school in this way. However, in the last few years the amount of school fund received has dropped quite significantly. There are probably many reasons for this, but perhaps the most obvious is remembering to send in a donation every year, half term or term.

We understand that some families may find donating to us difficult, especially with the current cost of living crisis. With that in mind we have decided to alter the way our donations are done and hopefully make it easier to maintain.

Several parents make their contribution by standing order and we are very grateful to them all.

As we have been accepted as a charity for tax purposes, we can claim the tax on donations to school fund by parents who are taxpayers if those parents sign a Gift Aid Declaration.

This means that for every pound you give we get an extra 25p from the Inland Revenue, helping your donation to go further.

Consequently, by setting up a standing order for say, £2 per month per child or £5 per month per family for parents with multiple siblings who attend St Mary's, you will guarantee the school a monthly income on which we can reclaim tax.

Please consider this option seriously. If you feel unable to sign up to a monthly payment, why not pay a one-off payment of £20 per child per year or £50 per family per year, again with a Gift Aid declaration.

A Gift Aid declaration and standing order form has been emailed out to our families. If you wish to gift aid your donations then please complete and return these to school at your earliest convenience.

*For those families who **do** wish to gift aid, we have set up the account listed below for donations.*

Account Name: St Marys School Fund – Gift Aid Account

*Sort Code: **30 - 19 - 14***

*Account Number: **03595246***

As always, we are extremely grateful for the support that we receive from the parents at St Mary's and appreciate you helping us be able to put on these events and treats for the children, which hopefully make their time at St Mary's more fun and memorable. If you have any queries or concerns, please contact the school. We ask you to be assured of the confidential manner in which the school will treat your details.

Wonderful home learning to celebrate



*These children have the most minutes on X-table Rockstars and Numbots!
Can they be beaten?*

Chess competition

Noah, Aadya and Mussie did so well representing St. Mary's in the Warwickshire Primary Schools Chess Championship.



Lovely home learning from Noah about South America and the maps that represent it.



A beautiful piece of art work representing St. George created by Tomas.

We are an operation encompass school. Therefore school is working alongside the police to ensure support for any child who has been involved in or witness to domestic abuse. Please find more information about this on our website or contact the school office.

Pastoral Team

If you require any support from school please speak to a member of our pastoral team

If you have a concern that a child is being harmed, is at risk of harm, or you receive a disclosure (intentionally or unintentionally) you must contact one of the following staff members as quickly as possible:



Amy Davis	Louise Yorke	Rachel Jones	Rachel Richards	Sharon Tame	Laura Noone	Jade Preedy
Deputy Headteacher	Headteacher	Senior Teacher	EYFS Lead	School Counsellor	AHT	AHT
Lead DSL	Deputy DSL	DSL	DSL	DSL	DSL	DSL

Alternatively, email DSL@stmaryrc.bham.sch.uk

Do not book holidays during term time

This is a reminder that holidays during term time are unauthorised. If you intend to take your child out of school during term time, we ask that you complete a holiday request form at least 2 weeks prior to the leave date where possible. Parents may be fined by the Local Authority for taking unauthorised leave of absence. Children need to be in school every day so please ensure holidays are only booked during school holiday time.

Good attendance, continues to be a school and government priority. Good attendance is 96% and above. Remember below 95% is a concern and below 90% is classed as persistent absence. If you have any problems with regards to getting your child to school or you are struggling to improve your child's attendance, please speak to Mrs. Yorke or Mrs. Davis.

We will announce the attendance for the previous week in this section of the newsletter each week.

Attendance and Punctuality: –

Our attendance for last week was –

Class	YRB	YRT	Y1L	Y1F	Y2E	Y2G	Y3L	Y3T	Y4J	Y4M	Y5M	Y5F	Y6R	Y6O
%	96	95.6	98.6	95.3	98.6	95	94.6	100	94.3	97.3	98.6	97	97.3	98.3
Lates	4	3	3	3	3	4	1	0	2	1	4	4	3	3
Whole School Attendance so far this year						96.4%		School Target				97%		

Well done 3T: - Our attendance champions!

Dates for this half-term

Autumn theme -

Autumn 11 Virtues

25th November 2024 - 10:00am

26th November 2024 - am

27th November 2024 - 9:15am

3rd December 2024 - am

3rd December 2024 - 3:30-4:30

4th December 2024 - 3:30-4:30

4th December 2024 - 7:00pm

5th December 2024 - 3:45-4:45

6th December 2024 - 9:30am

Families and Communities

Intentional and Prophetic

Year 4J Synagogue visit

Year 5 visit to Harborne library (9:15 SF and 11:00 SM)

Year 2 Mass in Church (and Year 1 classes attend) - parents welcome

Year 4 visit to Harborne library (9:15 4M and 11:00 4J)

PTA event - KSI Christmas Disco in school hall (children only)

PTA event - Reception class Christmas Disco in school hall (children only)

Annual Wreath making workshop in Parish Hall - £25

PTA event - KS2 Christmas Disco in school hall (children only)

Whole School Mass - Feast of Immaculate Conception in Church (Parents welcome)

9th December 2024 - 1:30pm

10th December 2024 - am

11th December 2024 - lunch

12th December 2024 - 9:30am

12th December 2024 - all day

13th December 2024 - all day

13th December 2024 - 9:00am

13th December 2024 - 6:45pm

13th December 2024 - 7:00pm

17th December 2024 - 10:15am

17th December 2024 - 2:15pm

18th December 2024 - 2:15pm

19th December 2024 - 2pm

20th December 2024 - 9:30am

20th December -

Penitential Service for Years 4 - 6 (children and staff only)

Year 3 visit to Harborne library (9:15 3L and 11:00 3T)

Christmas dinner day in school

Reception Nativity in Church (for parents)

Christmas jumper day in school

Year 3L non-school uniform day for their class Saint - St. Lucy

Year 3 Prayer Service for all Year 3 parents

Choir sing for Carols by Candlelight - meet at school 6:45pm

Carols by Candlelight in St. Mary's Church (all welcome)

KS2 Theatre Visit at Malvern Theatre 'Sleeping Beauty'

Year 1 and Year 2 Nativity in School Hall (parents welcome)

Year 3 and Year 4 Christmas Assembly in School Hall (parents welcome)

Year 5 and Year 6 Christmas Carol Service in Church (for parents)

Whole school Christmas Mass for all children, staff and parents

Break up for Summer holidays

1:40 finish time - Reception classes

1:45 finish time - KS1 classes

1:50 finish time - sibling group

2:00 finish time - KS2 classes

Star of the week

Congratulations to the following children who have shone in school over the last week:

- Year RB Rosabella *For her brilliant behaviour during our school trip to the theatre.*
- Year RT Kylie *Being a kind and caring friend who helps people to make good choices.*
- Year 1F Harlem *Wonderful enthusiasm and hard work this week.*
- Year 1L Ibrahim *Excellent behaviour and always listening attentively.*
- Year 2E Damien *For his excellent behaviour and good listening.*
- Year 2G Ava *Being a kind and caring friend who helps people to make good choices*
- Year 3L Ada *Always trying her best in everything she does and being a super role model for others!*
- Year 3T Olivia *Writing a fantastic, innovated narrative using up-levelled sentences and beautiful handwriting!*
- Year 4J Tobiloba *Sharing his super descriptive writing in English.*
- Year 4M Harry *Being an excellent role model for his peers!*
- Year 5F Joshua *For his excellent contributions in RE.*
- Year 5M Trinidad *Trying her best in everything she does.*
- Year 6O Claire *For her achievement in Reading this week.*
- Year 6R Cecile *For her diligent, organised and positive approach to all her work*

