



Archdiocese of Birmingham

# ST. MARY'S CATHOLIC PRIMARY SCHOOL

Vivian Road, Harborne, Birmingham, B17 0DN

Telephone: 0121- 464 2141 Fax: 0121-464 8312

Email: [enquiry@stmaryrc.bham.sch.uk](mailto:enquiry@stmaryrc.bham.sch.uk)

[www.stmaryrc.bham.sch.uk](http://www.stmaryrc.bham.sch.uk)

Headteacher: Miss H.M. Cusack M.Ed.



5<sup>th</sup> November 2019

Dear Parent

## **November is dedicated to the Holy Souls**

### **Y5L Class Assembly**

We welcome you to join Y5L (Mr Campbell-Cave's class) at their class assembly on Friday, 8<sup>th</sup> November. The assembly begins at 9:15.

### **Swimming**

This half term, Y4 will be going swimming on Tuesday mornings. Please ensure your child is prepared for their swimming lesson with the appropriate kit sent in each week.

### **Winter Uniform and PE kit**

The children should now be wearing their winter uniform i.e. shirts/blouses and ties. We also ask that children bring winter PE kit to school in order to take part in outdoor activities i.e. black/blue jogging bottoms, t-shirt, school jumper and trainers.

### **Dates for your Diaries**

#### **Nov:**

6 <sup>th</sup>	Open afternoon for prospective parents	13.45 – 15.00
8 <sup>th</sup>	Y5L Class Assembly	9.15
8 <sup>th</sup>	Music Assembly (see below)	14:30-15:15
14 <sup>th</sup>	'Book Bus'	8:00-16:00
15 <sup>th</sup>	Y2L Class Mass	9:15
18 <sup>th</sup>	Y1 Fire Station Visit	9.30 – 11.30
22 <sup>nd</sup>	Y6L Class Assembly	9.15
28 <sup>th</sup>	Y1&Y2 MAC Theatre Trip	
29 <sup>th</sup>	Y4F Class Mass	9:15
30 <sup>th</sup>	Parish/ PTA Christmas Fayre	12.00 – 15.00

#### **Dec:**

5 <sup>th</sup>	Christmas Dinner	
6 <sup>th</sup>	Reception Nativity	10.00 (Church)
6 <sup>th</sup>	Y6F Class Assembly	9:15
10 <sup>th</sup>	KS1 Nativity (Y2 + Y1L)	13:30
11 <sup>th</sup>	KS1 Nativity (Y2 + Y1F)	13:30

### **Polling Station – Thursday 12<sup>th</sup> December**

*School will be closed for staff and pupils on this date.*

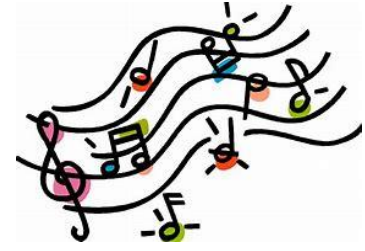
*Due to this, there will be two afternoon performances of the KS1 Nativity on the 10<sup>th</sup> and 11<sup>th</sup>.*

13 <sup>th</sup>	Y4L Class Mass	9:15
	Christmas Jumper Day	
16 <sup>th</sup>	Y3 Christmas Celebration for Y3 parents	9:15
16 <sup>th</sup>	Reception Christmas Party	
17 <sup>th</sup>	KS1 Christmas Party	
17 <sup>th</sup>	Christmas Carol Service	19.00 (Church)
18 <sup>th</sup>	Reception Trip - Ash End House Farm	9:00 - 15:15
18 <sup>th</sup>	KS2 Christmas Party	
20 <sup>th</sup>	Christmas Mass –whole school	9.30 (Church)
<b>Jan:</b>		
14 <sup>th</sup>	KS2 Theatre Trip	10:15

## Music Assembly – Friday 8<sup>th</sup> November 2019 (2:30-3:15)

Parents are invited to join us for an assembly to celebrate 'Music Week'. Each class will perform a song and CDs will be available to purchase. The cost will be £3 per CD or two for £5.

We look forward to seeing you there!



## Artwork installations in corridors.

The school has recently purchased some new designs for the corridors from 'School Signs'. These focus on the eight Beatitudes as found in Matthew's Gospel account, as well as Pope Francis' 2016 sermon in Malmo, Sweden.



Additionally, as we overhaul our curriculum to help our children deepen their Catholic faith, we have also adopted the Church's Social Teaching Caritas in Action which we are in the process of threading through our learning activities. This panel details the seven themes and forms a prominent place in our entrance hall.

Finally, we have a new Safeguarding information board which will be populated with relevant policies and what to do if you have a concern. This is next to the office window as you sign in.



## Message from the PTA

"Thanks to all who have sent in their order for IQ Christmas cards today, for those of you who have forgotten we will accept orders until Thursday afternoon at the very latest.

Next PTA meeting will be on Friday 15<sup>th</sup> Nov at 3.45pm (straight after pick up) in the school hall, you are all very welcome to attend with your children who will be supervised by a staff member. At this meeting we will be planning our next two exciting events- The Christmas Fayre and Wreath making workshop."

## A November Reflection

Is there a leaf upon the tree  
The Father does not see?  
Leaves fall, so do we all  
Return to earth, to sod.  
Sparrows and Kings,  
And all manner of things  
Fall, fall into the hands  
Of the living God.



## Message from Y6 Pupils

"There is a growing collection of lost property and lots of uniform with no names. Please could parents label all items of children's clothing."

Thank you,

Andrea and Thomas

Yours sincerely,

*H M Cusack*

H M Cusack, Headteacher