



Archdiocese of Birmingham  
**ST. MARY'S CATHOLIC PRIMARY  
SCHOOL**

Vivian Road, Harborne, Birmingham, B17 0DN

Telephone: 0121 464 2141

Email: [enquiry@stmaryrc.bham.sch.uk](mailto:enquiry@stmaryrc.bham.sch.uk)

[www.stmaryrc.bham.sch.uk](http://www.stmaryrc.bham.sch.uk)

Headteacher: Miss L. J. Price M.Ed.



St. Mary's mission: To love God above all things by: learning together, loving ourselves, loving each other, loving all people, loving life itself and constantly striving for excellence worthy of our God-given gifts.

## December is dedicated to the Immaculate Conception.

Our theme for the Autumn term is: 'The Dignity of the Human Person'

Our virtues for this half term are: - 'Learned and Wise'



Dear parents and carers,

10th December 2021

The third week of Advent symbolises Joy with the "Shepherd's candle" reminding us of the Joy the world experienced in the coming birth of Jesus. This weekend, the third candle - the pink candle - will be lit for Gaudete Sunday, and we rejoice because we are half-way through our preparations. We have had an exciting week in school, with Christmas lunch and a visit from Santa and we look forward to one more week in school before breaking up for our Christmas holidays on Friday 17th December.

Miss Louise Price

### *This week's Gospel and prayer*

Luke 3: 1-6

*'Prepare a way for the Lord, make His path straight.'*

Reflecting on this week's Gospel message we learn that:

- we must prepare ourselves for Jesus
- our actions have an impact on others.
- no matter what we have done, Jesus will always forgive our mistakes if we say sorry.

Dear Jesus,

*Thank you that no matter what we have done, you will always forgive our mistakes if we say sorry. Help us bow down our hearts to you this Advent.*

*Amen*

### Catholic Life in School

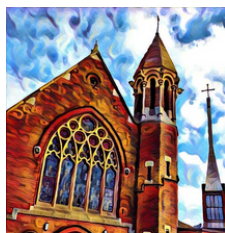
#### Whole school Mass for Immaculate Conception

The whole school gathered for Mass on the feast of the Immaculate Conception. We reflected that Mary, the mother of God, is full of Grace - conceived without sin.

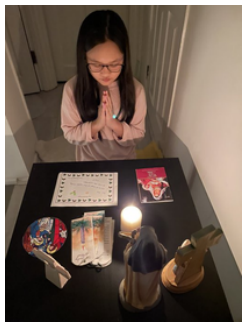


Whole School Mass in Church - 6.1.22 at 9:30am - Epiphany

Our next Mass in Church will be for **pupils only** on Wednesday 6th January at 9:30am. All pupils and staff will be celebrating next week's Mass and **parents will be able to watch via the livestream.**



# Advent prayer... at home



## Christmas Dinner Day!

The children really enjoyed Christmas dinner day.

It was so nice to see the teachers serving the children and the children serving the teachers.



## Christmas Jumper Day

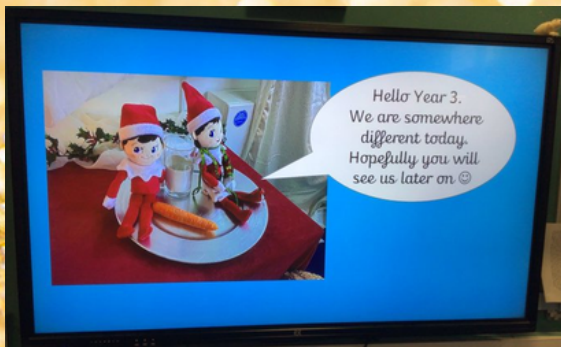
The children really enjoyed Christmas jumper day and meeting Santa today.

We're all beginning to feel very festive now.





 *The elves are still getting up to mischief* 



*This week's news*



*The children really enjoyed their Christmas discos this week. Thank you PTA and all the staff for supporting them.*



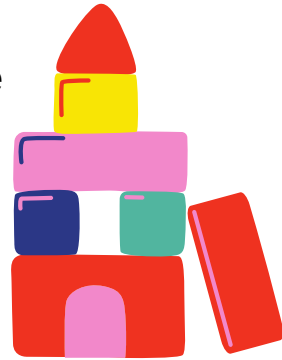
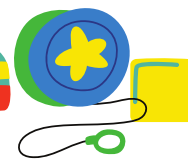


Amazing creativity from Year 2 - look at these spectacular stables!



Supporting our local Birmingham children this Christmas

Thank you for your donations  
Our final collection time is Wednesday 15th December.



Reception news: -  
Reception class are preparing for their nativity.



Year 1 news: -  
Year 1 have been learning about their different senses.



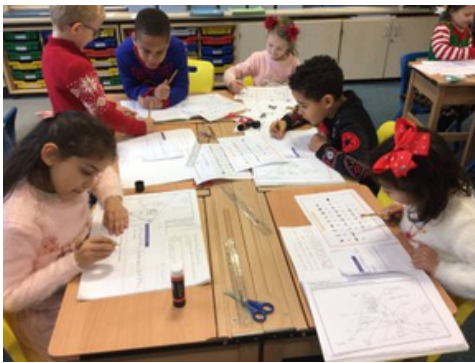
*Year 2 news: -*

Year 2 have baked and evaluated their bread products.



*Year 3 news: -*

Year 3 have been decoding Egyptian Hieroglyphics.



*Year 4 news: -*

Year 4 have been debating about the use of plastic and whether plastic bags should be used or not.

*Year 5 news: -*

Year 5 have improved their tennis skills.



Year 6 news: -

Year 6 have been translating 2D shapes on all 4 quadrants.



## The Choir

The choir went to sing for the residents at the Kendrick Centre. They really enjoyed spreading some festive cheer.



## Parish News



*St Mary's Parish Christmas Mass times:*

*Christmas Eve Friday 24th: 6.00pm (families, folk music);  
8.30pm (organ, choir) - both these are 'Midnight' Masses;*

*Christmas Day 25th: 8.00am; 9.30am (families, folk music), 11.30am (organ).*



*Entry is by ticket only, (250 maximum at each Mass), tickets now only available for 8am and 11.30am on Christmas Day and can be obtained only after each of the Saturday/Sunday Masses this weekend, not from the Parish Office.*



*Holy Communion and Confirmation preparation programme*

If your child is preparing to receive the sacrament of Holy Communion or Confirmation this year, classes will run on Saturdays, beginning on the **8th January 2022**.

9:30 - 11:00 For Holy Communion

11:30 - 12:45 for Confirmation

Please collect a registration form from the priory office, if you are not yet registered.



Help! A friendly local Care Home has real need of part- and full-time Carers, - and a cook! For details, see Fr John

## Reminders

### Correct Uniform

The children should now be wearing their winter uniform i.e. shirts/blouses and ties.

We also ask that children come to school in their winter PE kit on the days that they have PE. Again children should be in uniform for PE which is black/blue plain jogging bottoms (not patterned / not another colour), yellow t-shirt, school jumper and **black trainers**.



### Jewellery



To **ensure the safety of all children**, we will only allow children to wear small stud earrings (not dangly earrings) and a watch, on the days that they are not doing PE.

On PE days we are asking that children do not wear any jewellery, so that it is not lost if they are asked to remove it for physical lessons. Thank you for supporting us with this, your child's safety is at the forefront of our uniform decisions. .

### Additional school clubs

We have several school clubs running in school now

#### Before school clubs

Wednesdays (7:45-8:45) – Karate – For Y1, Y2, Y3 and Y4

Thursdays (7:45-8:45) – Karate – For Y4, Y5 and Y6

Fridays (7:45-8:45) – Karate – For Y1, Y2 and Y3 (*this club is full*).



#### After school clubs

Mondays (3:20 – 4:20) – Rugby – For Y1 and Y2 (*still spaces*)

Wednesdays (3:30 – 4:30) – Netball – For Y5 and Y6

(3:30 – 4:30) – Football – For Y6

(3:30 – 4:45) – Chess – For Y3

Thursdays (3:30 – 4:45) – Chess – For Y4, Y5, Y6



Please be on time for karate as it disrupts the lesson when children are late



### *No dogs / smoking in the school grounds*

Unfortunately, dogs are not allowed in the school grounds under any circumstances; whether on a lead or carried. This is due to health and safety reasons, and that some children are scared by dogs no matter the size. Thank you for your understanding with this.

In addition, we do not allow smoking of any sort, including vapes or e-cigarettes on the school grounds.



### **NO PARKING!**

Thank you to our parents who are being considerate with their parking. Unfortunately, we do have some parents who continue to park illegally on double yellow lines and in no stopping zones. We are also having complaints that parents are blocking / parking in private roads.

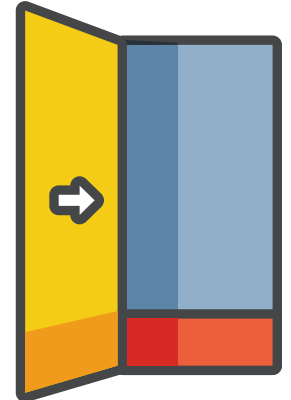
Many of our residents are elderly and this is not acceptable. Your information / car registration may be passed on to the police / city council, if you continue to park illegally. Please put the safety of our children and community first when parking.

### **SATs Week for Year 6**

Children in Year 6 will be taking their SATs Tests from Monday 9th to Friday 13th May 2022. All Year 6 children are required to be in school every day during SATs week.

### **Open door policy**

We have an open door policy at St. Mary's. A member of SLT (Miss. Price, Mrs. Davis or Mrs. Jones) is available at the start and end of every day for quick queries – or if a meeting is needed, please arrange through the enquiry email or the office. SLT do not use e-schools in the same way teachers do, so please do not contact us on there, as your query may be missed. Thank you.



*Mr. Wilson will be leaving us at the end of the term as he has a new job to be a teacher in another school, closer to home. I am sure that you will join us in wishing him all the best in his future career. He'll be very missed by the children and staff here at St. Mary's. Good luck Mr. Wilson and thank you for all that you have done here.*





# KEEPING SAFE

## This is an Operation Encompass School

We are an operation encompass school. Therefore school is working alongside the police to ensure support for any child who has been involved in or witness to domestic abuse. Please find more information about this on our website or contact the school office.

### Online Safety



Stay up to date with everything that is happening at St. Mary's by following us on our Twitter Page and giving us more likes!!!

*If buying electronic gifts and new technology for your children this Christmas, please make sure that you speak to your children about keeping safe when using it...*

*Mobile phones, tablets and laptops can open up a world of exploration, learning and fun and children should be encouraged to make the most of the benefits. But there are also risks and dangers to being online - safety measures can be put in place - read this website to find out more.  
<https://www.gov.uk/government/news/keep-children-safe-online-this-christmas-top-tips>*

When should my child self-isolate or miss school?



YES

- If your child develops Covid symptoms at home, they should stay at home and should book a PRC test), NOT a Lateral Flow test.
- If your child develops Covid symptoms at school, they will be sent home and you should book them a PRC test.
- **If your child tests positive for Covid, they will need to self-isolate. The rest of the household does not need to self-isolate if they are under 18 or fully vaccinated – but instead should book a PCR test.**



NO

- All children **MUST** attend school unless they are ill.
- From 16<sup>th</sup> August 2021, children under 18 (or double-vaccinated adults) do not need to self-isolate or miss school if a member of their household or a contact, has Covid.
- Instead, they will need to book a PCR test but can continue coming to school so long as they have no symptoms and the test result is negative.

### Dates for the diary

Please remember that we are breaking up for Christmas on Friday 17th December earlier than usual..

*Break up for Christmas break!*

*1:40 finish time - Reception classes*

*1:45 finish time - KSI classes*

*1:50 finish time - sibling group*

*2:00 finish time - KS2 classes*



## Year Reception

13.12.21 at 9:30am  
in the Church

### WRIGGLY NATIVITY

Being so excited for Jesus' birthday that we just can't keep still.

## Years 1 and 2

14.12.21 at 9:15am  
and at 2:15pm  
in the School hall

### BETHLEHEM'S BUZZIN'

Join our Holy Family as they look for room at the Inn so that Mary can have her child.

## Years 3 and 4

15.12.21 at 9:15am  
and at 2:15pm  
in the School hall

### BETHLEHEM

Bethlehem the Musical: a story of how opening our hearts to others is the true gift of Christmas.

## Years 5 and 6

16.12.21 at 1:45pm  
in the Church

### CAROL SERVICE

Traditional and modern carols that recount the story of Jesus' birth.

Autumn Term 2021	Spring Term 2022	Summer Term 2022
<b>Autumn 1</b>	<b>Spring 1</b>	<b>Summer 1</b>
<p>Thursday 2<sup>nd</sup> September - INSET - Children NOT in School</p> <p>Friday 3<sup>rd</sup> September - INSET - Children NOT in School</p> <p>Monday 6<sup>th</sup> September – Children return to school</p> <p>Ends: Friday 22<sup>nd</sup> October</p>	<p>Monday 3<sup>rd</sup> January – Bank Holiday</p> <p>Tuesday 4<sup>th</sup> January – Children return to school</p> <p>Tuesday 1<sup>st</sup> February - INSET - Children NOT in School</p> <p>Ends: Friday 18<sup>th</sup> February</p>	<p>May Day Bank Holiday: Monday 2<sup>nd</sup> May</p> <p>Tuesday 3<sup>rd</sup> May – Children return to school</p> <p>Thursday 5<sup>th</sup> May - Closed for Local Election Day</p> <p>Ends: Friday 27<sup>th</sup> May</p>
<p><b>Half-Term:</b> Monday 25<sup>th</sup> October to Friday 29<sup>th</sup> October 2021</p>	<p><b>Half-Term:</b> Monday 21<sup>st</sup> February to Friday 25<sup>th</sup> February 2022</p>	<p><b>Half-Term:</b> Monday 30<sup>th</sup> May to Friday 3<sup>rd</sup> June 2022</p>
<b>Autumn 2</b>	<b>Spring 2</b>	<b>Summer 2</b>
<p>Starts: Monday 1<sup>st</sup> November Ends: Friday 17<sup>th</sup> December</p>	<p>Starts: Monday 28<sup>th</sup> February</p> <p>Monday 28<sup>th</sup> March - INSET - Children NOT in School</p> <p>Ends: Thursday 14<sup>th</sup> April 2022</p>	<p>Starts: Monday 6<sup>th</sup> June</p> <p>Tuesday 5<sup>th</sup> July - INSET - Children NOT in School</p> <p>Ends: Thursday 21<sup>st</sup> July 2022</p> <p>Friday 22<sup>nd</sup> July - Closed for Queen's Jubilee</p>
<p><b>Christmas Holidays:</b> Monday 20<sup>th</sup> December to Friday 31<sup>st</sup> December 2021</p>	<p><b>Easter Holiday:</b> Monday 18<sup>th</sup> April to Friday 29<sup>th</sup> April 2022</p>	<p><b>Summer Holidays:</b> Start Monday 25<sup>th</sup> July 2022</p>

Term Dates

# Star of the week

*Congratulations to the following children who have shone in school over the last week:*

Year RL	Olivia	learning her lines well and being a fantastic Inn Keeper in our Nativity.
Year RF	Willow	fantastic acting in our Nativity.
Year 1L	Harry	always being a fabulous role model and trying his best.
Year 1F	Jiantrine	super fact-file all about turtles.
Year 2L	Ben	excellent reading in Mass.
Year 2F	Rohan	fantastic fraction work in Maths.
Year 3L	Thomas	fantastic attitude towards learning this week.
Year 3F	Nisha	brilliant performance in gymnastics.
Year 4L	Flevin	setting an outstanding example of correct behaviour.
Year 4F	Emily	fantastic gymnastics routine.
Year 5L	Dontae	fantastic participation in all lessons.
Year 5F	Henri	beautiful singing and perseverance in handwriting.
Year 6L	Jem	being so helpful and thoughtful towards members of staff.
Year 6F	Noah	bringing joy to the classroom.

